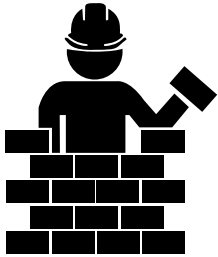


# INJURIES IN LONG-TERM CARE WORKPLACES

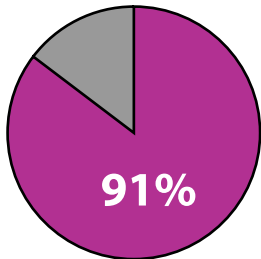


Continuing Care workers are more likely... to be injured on the job



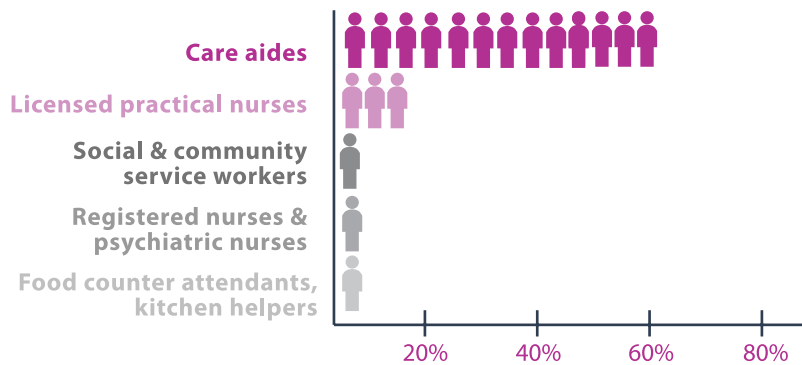
OVER **2,900** CLAIMS EVERY YEAR

AGE **45-54**  
37% of claims



MALE FEMALE

## WHO GETS HURT?



TOP 5 PROFESSIONS

## HOW DO PEOPLE GET HURT?



**51%** OVEREXERTION



**11%** ACTS OF VIOLENCE



**10%** SLIPS & FALLS